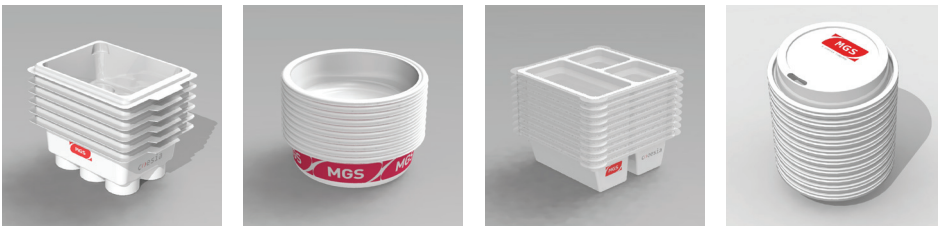


# MGS Pick n'Place technologies – feeding and placing products accurately, safely and quickly

Your line's success depends on accurate feeding and placement of trays and products. Machines that perform this efficiently and consistently increase your speed while reducing waste and human interaction. They also reduce the risk of injury by minimizing operator time spent on repetitive tasks as well as costs associated with manual labor.

## MGS: Feeding solution experts

As automation machinery providers with experts in every industry, we've partnered with manufacturers across the world to create unique product-feeding solutions for key points of their line. And, we're part of Coesia, the world's largest network of packaging technologies and process solutions.



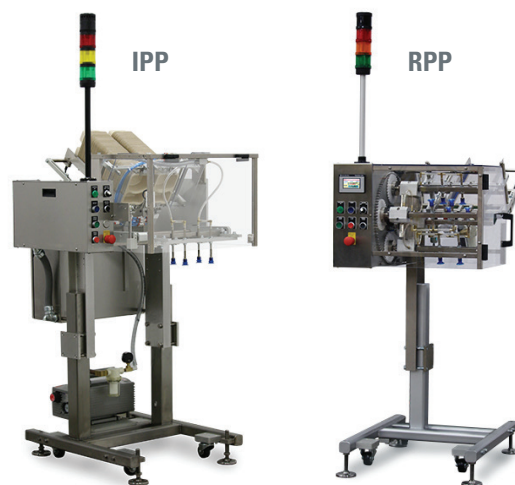
## Equipment designed for your specific product

Our portfolio includes the IPP™ Intermittent Pick n'Place and RPP™ Rotary Pick n'Place®. The IPP is well-suited for trays and other solid components such as trays and lids, while the RPP is ideal for products such as medical devices or flexible pouches suitable for consistent motion.

### Placing with precision

Both machines feature an industry-leading warranty and are capable of:

- Repeatable, accurate placement
- Creating kit contents such as trays, products and literature
- Performing verified batch counting



**The IPP is the only feeder on the market with both vertical and horizontal placement.**

## VAST EXPERIENCE ACROSS INDUSTRIES

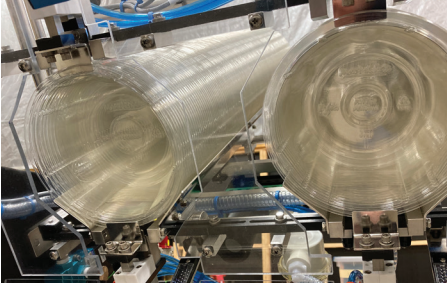
While our IPP and RPP serve every industry, we have extensive experience with the following:

**Food:** Confectionery, bakery, meat and produce trays, ready-made meals, tubs, bowls, clamshells, carrier and layer boards

**Life sciences:** Literature, sachets, blister cards, vial trays, thin strips, transdermals, wound care dressings

**Consumer goods:** Greeting cards, stationery, envelopes, coupons, board games, sticky notes, gift cards

## Fast, repeatable changeovers



With our Kwik Klips™ quick-change tooling, both machines can handle a wide range of products on the same machine. Because clipping is factory-set for your specific product, there's no need for fine-tuning, resulting in unlimited flexibility and operator efficiency.

### Smart machine design

All of our machines are designed with sanitary construction and available in caustic washdown to suit a variety of production environments and withstand direct, high-pressure chemical cleaning agents.

### Inspection capabilities

Both the IPP and RPP can do inline or batch inspection, with vision and barcode scanning and reject verification. Serialization is also possible.

## Reliable operation and expert validation assistance

Throughout your project, our certified project management team will be your single point of contact. During commissioning, our documentation package greatly reduces your workload during validation, helping you get to full production quickly. After commissioning, you'll have access to our on-site technicians and, if needed, remote-access technology. And you'll always have 24/7 support through our worldwide network of Coesia companies.

**MINIMAL DOWNTIME.  
MAXIMUM PRODUCTIVITY.**

With our quick-change tooling, you can perform changeovers **in less than three minutes.**

**Click the links below to see our machines in motion**

[!\[\]\(9c2e8d1b5bd77cb5c9f83b7a9cff79fd\_img.jpg\) \*\*IPP for trays with Kwik Klip tooling\*\*](#)

[!\[\]\(e3275251d0893157c3584e20c81dc3ba\_img.jpg\) \*\*IPP for cookie trays\*\*](#)

[!\[\]\(f60b7a900783ac3fd531bfd9c111be6d\_img.jpg\) \*\*IPP for lidding\*\*](#)

[!\[\]\(f1c5da15572e3e09d343161be98f508d\_img.jpg\) \*\*RPP for small pouches\*\*](#)

[!\[\]\(235bfe13ebf007ce2eea9e689707fac7\_img.jpg\) \*\*RPP for large labels\*\*](#)

[!\[\]\(eabd9f9ababee93effadc3b380fe65fd\_img.jpg\) \*\*RPP batch counter\*\*](#)

**CONSISTENT. EFFICIENT. ACCURATE.**

Looking to increase your speed, efficiency and profitability? MGS can help you find the right automated feeding equipment to eliminate manual product placement.

Visit [www.mgsmachine.com](http://www.mgsmachine.com) or email [info@mgsmachine.com](mailto:info@mgsmachine.com)

### MGS

9900 85th Ave North, Maple Grove, MN 55369 USA

T +1 (800) 790-0627

[www.mgsmachine.com](http://www.mgsmachine.com)

